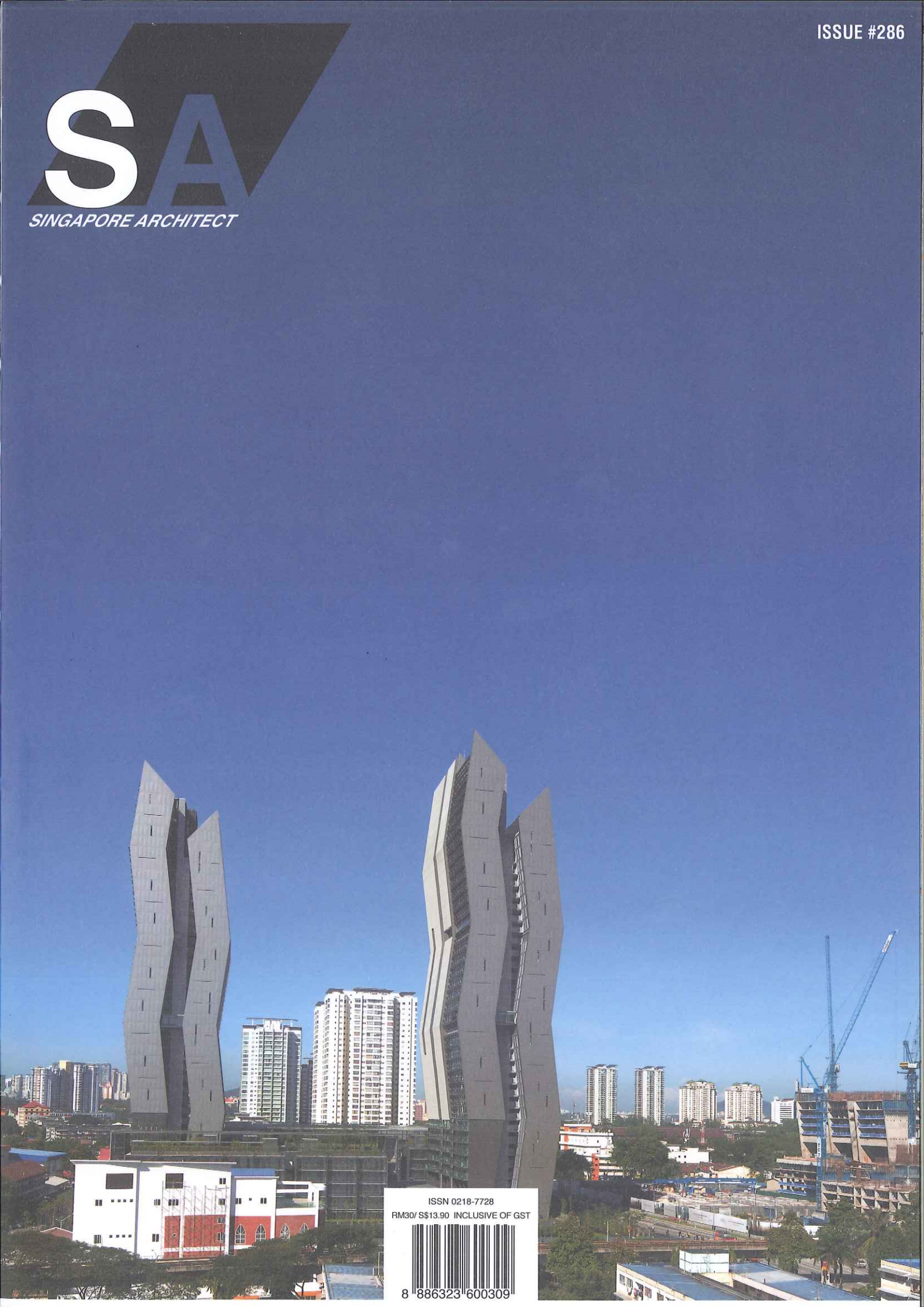


SA

SINGAPORE ARCHITECT

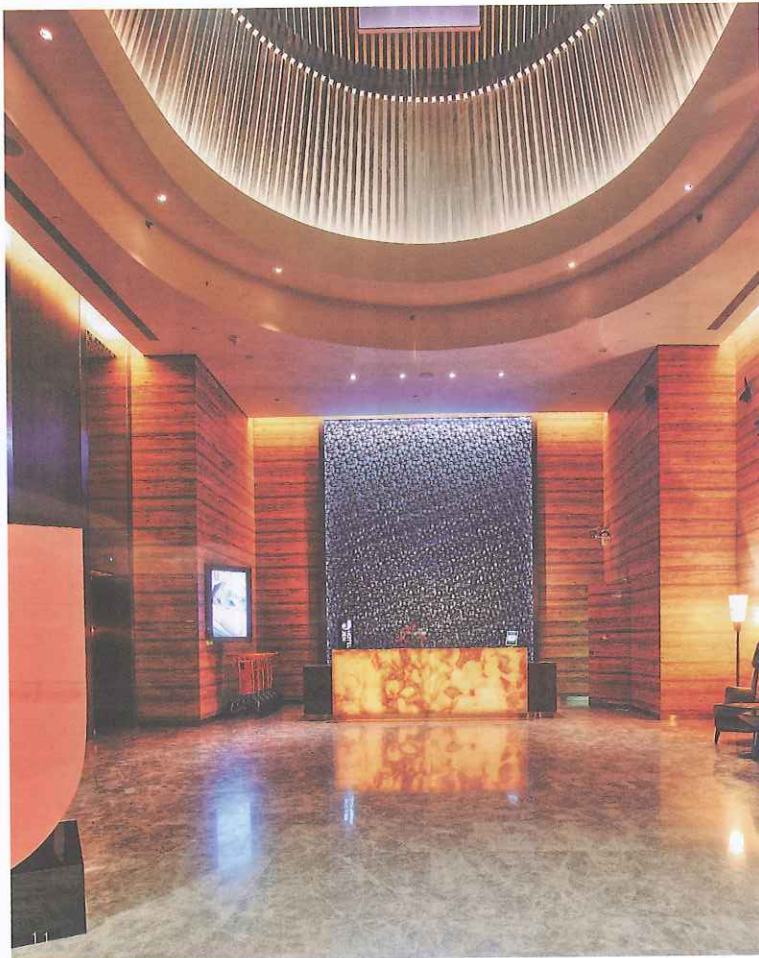


ISSN 0218-7728
RM30/ S\$13.90 INCLUSIVE OF GST



8 886323 600309

NEWS & EVENTS



HOTEL JEN IS THE NEW KID ON THE BLOCK

Text by Domenica Tan

Hotel Jen at Orchard Gateway is the first of this new brand by Hong Kong-based Shangri-La International Hotel Management Ltd and the first hotel in Asia Pacific to undergo the transformation from Shangri-La's Traders Hotel. The rebranding of Traders Hotel to Hotel Jen seeks to attract modern-day travellers who demand quality, comfort, value, privacy and efficiency under one roof. The hotel was architecturally designed by Tange Associates, while public areas were designed by interior design consultant DPD International Pte Ltd.

Despite its location amidst the hustle and bustle of the busy streets along Orchard Road, facilities in Hotel Jen such as a rooftop pool provide a place of respite for guests while being open to views of the city. Careful consideration was given to the choice of materials used—many of which are Green Mark approved. Low-emission lightings are also used.

The drop-off lobby at the ground floor may seem simple and unassuming, yet its aim to welcome hotel guests is not neglected. The approximately nine-metre-high ceiling and recessed lighting design provide a sense of anticipation and welcomes guests directly into the

space. The hotel reception lobby at the ninth floor is designed with neutral tones, with choice of materials such as timber and natural stones giving the space an earthy tone. Installations and intricate wall panel designs serve to accentuate and provide interesting elements to the warm and cosy atmosphere. Sleekly designed furniture adds to the elegance of the space.

imagined to be a fairytale garden, lighting designs parallel starlight. Art installations with motif of butterflies add to the character of the fabric-like textured walls. Carpet patterns and colours are designed to resemble water lilies and floating pads in ponds and lakes. The bar counter is located towards the far end of the space to ensure privacy while also allowing views to the bustling streets of Orchard Road.

11 The grand entrance of Hotel Jen welcomes guests into the space. (Photo: DPDi Photography)

12 Intricate designs on carpets and wall panels extend from the lobby to the restaurant and the lift lobby. (Photo: DPDi Photography)

13 The lobby bar is imagined to be a fairytale garden. (Photo: DPDi Photography)

AN EXTENSION OF CULTURE AND LUXURY AT GRAN MELIÁ XI'AN

Text by Domenica Tan

Meliá Hotels International is a Spanish hotel chain, popular across Europe, with various extensions of its brand across the world. Five-star Gran Meliá Hotel in Xi'an is a recent addition to Gran Meliá Luxury Hotels and Resorts. Under the professional guidance of DPD International Pte Ltd, the interior of Gran Meliá Xi'an is nothing short of unique and luxurious.

Gran Meliá Xi'an is located in the new district of the southern part of an old-walled city, Qu Jiang. Inspired by Xi'an's rich culture and history and an understanding of the glorious and prosperous period during the Tang dynasty, the hotel's interior design incorporated a mix of traditional and avant-garde decorations and fixtures. The result is an ambience and experience different from other conventional five-star hotels.

The art of opera performance is deeply ingrained in the history and culture of Xi'an. The designers took the extra effort to watch and understand opera acts and analyse the elaborate costumes and head gears, adapting them into the design of the interior. The main

lobby boasts a "moon gate stage," inspired by the place where actors and actresses of an opera perform for an audience. This space doubles as a bar counter where drinks can be served to hotel guests at the lounge. The moon gate also alludes to traditional Chinese gardens and reflects a sense of place of the larger surrounding.

Above the long corridor extending across the hotel reception area, undulating lighting designs parallel "water sleeves," which are long flowing sleeves on costumes used by opera performers that accentuate their gestures and expressions. The designers boldly decided to incorporate more colours and patterns in the flooring, referencing the bright and colourful head gear of opera performers. The floor patterns are also inspired by the fine detailing of silk and ceramics—designs on celadon pottery—often found and used in China.

14 The moon gate is iconic in traditional Chinese culture and has been adapted for the main lobby. (Photo: DPDi Photography)

